

Anti-CDX2 Mouse Monoclonal Antibody



<u>Catalog No.</u>	<u>Size</u>
E010100-01	50µl
E010100-02	100µl

Product Name	Anti-CDX2 Mouse Monoclonal Antibody
Product type	Primary Antibody
Application	WB IHC IF
Description	Mouse Monoclonal toCDX2 antibody
Immunogen	A synthetic peptide conjugated to KLH
Specificity	Human

Background Information

CDX2 is a caudal type homeobox gene that encodes an intestine-specific transcription factor that is expressed early in intestinal development and may be involved in the regulation of proliferation and differentiation of intestinal epithelial cells. It is expressed in the nuclei of epithelial cells throughout the intestine, from duodenum to rectum. The CDX2 protein is expressed in primary and metastatic colorectal carcinomas and has also been demonstrated in the intestinal metaplasia of the stomach and intestinal-type gastric cancer, while it is not expressed in the normal gastric mucosa. Studies have shown that CDX2 is superior marker compared to CK20

Application Notes

Optimal working dilutions should be determined experimentally by the investigator. Prepare working dilution immediately before use. Suggested starting dilutions are as follows:

Western blot (1:1000-1:5,000), Immunofluorescence and Immunocytochemistry (1:200-1:800).

Host

Mouse

Clonality

14H6

Storage Buffer

1mg/ml in PBS, pH 7.4 with 0.02% sodium azide, 50% Glycerol.

Form

Liquid, 1mg/ml

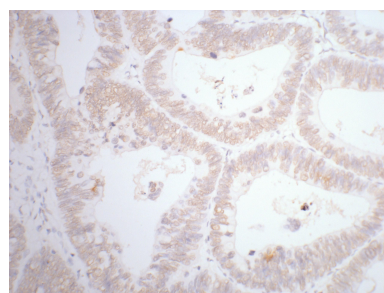
Storage Instructions

Stable for 1 year at -20°C from date of shipment. For maximum recovery of product, centrifuge the original vial after thawing and prior to removing the cap. Aliquot to avoid repeated freezing and thawing. Aliquot will be stable at 4°C for 3 months.

Images



Western blot analysis of 293T whole cell lysates using CDX2 mouse mAb dilution at 1: 1000



1: 200 dilution staining CDX2 by immunohistochemistry on paraffin-embedded human rectal cancer tissue.