

Anti-Cytokeratin 7 Mouse Monoclonal Antibody



| <u>Catalog No.</u> | <u>Size</u> |
|--------------------|-------------|
| E010120-01 | 50µl |
| E010120-02 | 100µl |

| | |
|---------------------|--|
| Product Name | Anti-Cytokeratin 7 Mouse Monoclonal Antibody |
| Product type | Primary Antibody |
| Application | WB IHC IF |
| Description | Mouse Monoclonal to Cytokeratin 7 antibody |
| Immunogen | A synthetic peptide conjugated to KLH |
| Specificity | Human Mouse Rat |

Background Information

Cytokeratin 7 is a 54kD intermediate filament protein found in a variety of glandular epithelia. Cytokeratin 7 has been found in columnar and glandular epithelium of the lung, cervix, breast, bile ducts and larger collecting ducts of the kidney. It is present in the transitional epithelium of bladder as well as ovarian and lung epithelia, and occasionally staining of blood vessel cell walls, particularly endothelial cells, may be observed. However, Cytokeratin 7 is not expressed by epithelial cells of the gastrointestinal tract, colon or prostate. Keratin 7 is often co expressed with keratin 19

Application Notes

Optimal working dilutions should be determined experimentally by the investigator. Prepare working dilution immediately before use. Suggested starting dilutions are as follows: Western blot (1:1000-1:5,000), Immunofluorescence and Immunocytochemistry (1:200-1:800).

Host

Mouse

Clonality

Storage Buffer

1mg/ml in PBS, pH 7.4 with 0.02% sodium azide, 50% Glycerol.

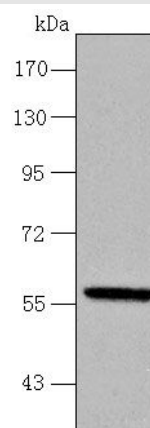
Form

Liquid, 1mg/ml

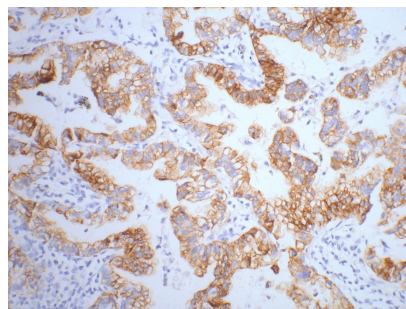
Storage Instructions

Stable for 1 year at -20°C from date of shipment. For maximum recovery of product, centrifuge the original vial after thawing and prior to removing the cap. Aliquot to avoid repeated freezing and thawing. Aliquot will be stable at 4°C for 3 months.

Images



Western blot analysis of A549 cell lysate with CK7 mouse mAb diluted at 1:1000



1:200 dilution staining CK7 by immunohistochemistry on paraffin-embedded human lung cancer tissue.