

# Anti- Cytokeratin 8 Mouse Monoclonal Antibody



<u>Catalog No.</u>	<u>Size</u>
E010130-01	50µl
E010130-01	100µl

<b>Product Name</b>	Anti-Cytokeratin 8 Mouse Monoclonal Antibody
<b>Product type</b>	Primary Antibody
<b>Application</b>	WB IHC IF
<b>Description</b>	Mouse Monoclonal to Cytokeratin 8 antibody
<b>Immunogen</b>	A synthetic peptide conjugated to KLH
<b>Specificity</b>	Human Mouse Rat

## Background Information

Cytokeratin 8 belongs to the type B (basic) subfamily of high molecular weight keratins and exists in combination with cytokeratin 18. Cytokeratin 8 is primarily found in the non squamous epithelia and is present in majority of adenocarcinomas and ductal carcinomas. It is absent in squamous cell carcinomas.

## Application Notes

Optimal working dilutions should be determined experimentally by the investigator. Prepare working dilution immediately before use. Suggested starting dilutions are as follows: Western blot (1:1000-1:5,000), Immunofluorescence and Immunocytochemistry (1:200-1:800).

## Host

Mouse

## Clonality

## Storage Buffer

1mg/ml in PBS, pH 7.4 with 0.02% sodium azide, 50% Glycerol.

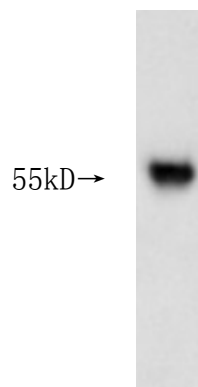
## Form

Liquid, 1mg/ml

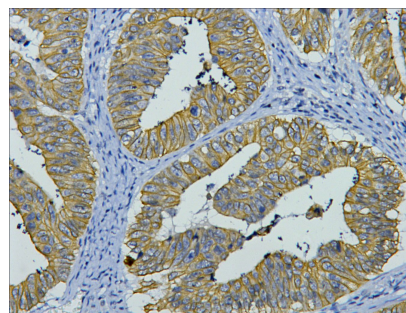
## Storage Instructions

Stable for 1 year at -20°C from date of shipment. For maximum recovery of product, centrifuge the original vial after thawing and prior to removing the cap. Aliquot to avoid repeated freezing and thawing. Aliquot will be stable at 4°C for 3 months.

## Images



Western blot analysis of Hela cell lysate with CK8 mouse mAb diluted at 1:1000.



1:200 dilution staining CK8 by immunohistochemistry on paraffin-embedded human colon cancer tissue.