

Anti-Galectin-3 Mouse Monoclonal Antibody



<u>Catalog No.</u>	<u>Size</u>
E010170-01	50 μ l
E010170-02	100 μ l

Product Name	Anti-Galectin-3 Mouse Monoclonal Antibody
Product type	Primary Antibody
Application	WB IHC IF
Description	Mouse Monoclonal to Galectin-3 antibody
Immunogen	A synthetic peptide conjugated to KLH
Specificity	Human Mouse Rat

Background Information

Galectin 3 is one of the more extensively studied members of this family and is a 30 kDa protein. Due to a C-terminal carbohydrate binding site, Galectin 3 is capable of binding IgE and mammalian cell surfaces only when homodimerized or homooligomerized. Galectin 3 is normally distributed in epithelia of many organs, in various inflammatory cells, including macrophages, as well as dendritic cells and Kupffer cells. The expression of this lectin is up-regulated during inflammation, cell proliferation, cell differentiation and through trans-activation by viral proteins

Application Notes

Optimal working dilutions should be determined experimentally by the investigator. Prepare working dilution immediately before use. Suggested starting dilutions are as follows: Western Blot (1:1000-1:3000), Immunofluorescence and Immunocytochemistry (1:200-1:800).

Host

Mouse

Clonality

Storage Buffer

1mg/ml in PBS, pH 7.4 with 0.02% sodium azide, 50% Glycerol.

Form

Liquid, 1mg/ml

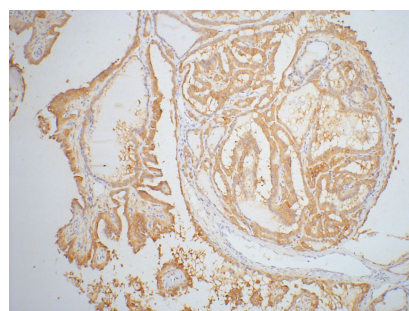
Storage Instructions

Stable for 1 year at -20°C from date of shipment. For maximum recovery of product, centrifuge the original vial after thawing and prior to removing the cap. Aliquot to avoid repeated freezing and thawing. Aliquot will be stable at 4°C for 3 months.

Images



Western blot analysis of NIH-3T3 cell lysate with galectin-3 mouse mAb at 1:1000.



1:200 dilution staining galectin-3 by immunohistochemistry on paraffin-embedded human thyroid tissue.