

Anti-MYH Mouse Monoclonal Antibody



<u>Catalog No.</u>	<u>Size</u>
E010220-01	50 μ l
E010220-02	100 μ l

Product Name	Anti-Myosin Heavy Chain Mouse Monoclonal Antibody
Product type	Primary Antibody
Application	WB IHC IF
Description	Mouse Monoclonal to Myosin Heavy Chain antibody
Immunogen	A synthetic peptide conjugated to KLH
Specificity	Human Mouse Rat

Background Information

Muscle myosin is a hexameric protein that consists of 2 heavy chain subunits (MHC), 2 alkali light chain subunits (MLC) and 2 regulatory light chain subunits (MLC-2). Cardiac MHC exists as two isoforms in humans, alpha-cardiac MHC and beta-cardiac MHC. These two isoforms are expressed in different amounts in the human heart. During normal physiology, beta-cardiac MHC is the predominant form, with the alpha-isoform contributing around only 7% of the total MHC. Mutations of the MHC genes are associated with several different dilated and hypertrophic cardiomyopathies

Application Notes

Optimal working dilutions should be determined experimentally by the investigator. Prepare working dilution immediately before use. Suggested starting dilutions are as follows: Western Blot (1:1000-1:3000), Immunofluorescence and Immunocytochemistry (1:200-1:800).

Host

Mouse

Clonality

Storage Buffer

1mg/ml in PBS, pH 7.4 with 0.02% sodium azide, 50% Glycerol.

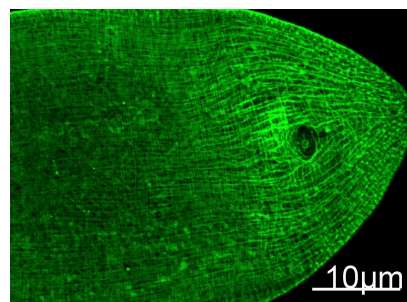
Form

Liquid, 1mg/ml

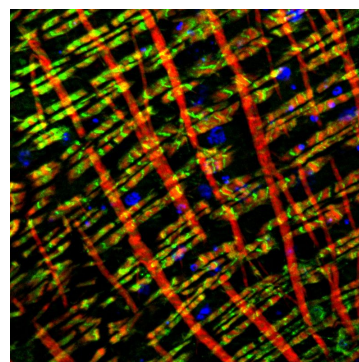
Storage Instructions

Stable for 1 year at -20°C from date of shipment. For maximum recovery of product, centrifuge the original vial after thawing and prior to removing the cap. Aliquot to avoid repeated freezing and thawing. Aliquot will be stable at 4°C for 3 months.

Images



Immunofluorescence Staining of nematode tissue with MYH mouse mAb(11C2) diluted at 1:100. (Provide by Tsinghua University).



Immunofluorescence double Staining of fruit fly tissue with MYH mouse mAb(11C2)(Green) and F-actin mouse mAb(red) (Provide by NIBS)