

# Anti- MeCP2 Polyclonal Antibody



Catalog No.	Size
E010270-01	50 µl
E010270-02	100 µl

Specificity	Anti- MeCP2 (Human)
Source	Rabbit Polyclonal
Application	WB
Form	Liquid, 1 mg/ml

## Specificity and Sensitivity

Methyl-CpG-binding protein 2(MeCP2), whose exact function is unclear. It appears to help regulate gene activity (expression) by modifying chromatin, the complex of DNA and protein that packages DNA into chromosomes. The MeCP2 protein usually regulates genes involved in brain function, even though this protein is found throughout the body. Within the brain, the MeCP2 protein is important for the function of nerve cells (neurons) and is present in high levels in mature neurons. This protein likely plays a role in maintaining connections (synapses) between neurons, where cell-to-cell communication occurs. Many of the genes that are known to be regulated by the MeCP2 protein play a role in normal brain function, particularly the maintenance of synapses.

## Specificity and Sensitivity

MeCP2 antibody detects endogenous MeCP2 proteins.

## Source and Purification

The antibody was affinity-purified from rabbit antiserum by affinity-chromatography using epitope-specific immunogen.

## Application Notes

Optimal working dilutions should be determined experimentally by the investigator. Suggested starting dilutions are as follows:

WB: 1:3,000

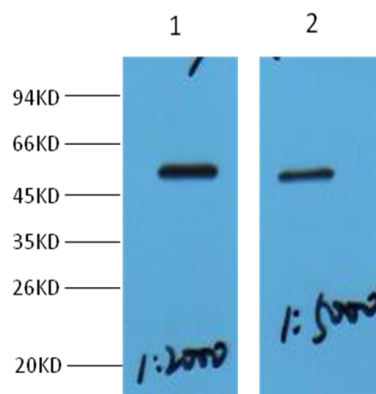
## Storage Buffer

Rabbit IgG in phosphate buffered saline (without  $Mg^{2+}$  and  $Ca^{2+}$ ), pH 7.4, 150mM NaCl, 0.02% sodium azide and 50% glycerol.

## Storage Instructions

Stable for 1 year at  $-20^{\circ}\text{C}$  from date of shipment. For maximum recovery of product, centrifuge the original vial after thawing and prior to removing the cap. Aliquot to avoid repeated freezing and thawing. Aliquot will be stable at  $4^{\circ}\text{C}$  for 3 months.

## Images



Western blot analysis of Hela with MeCP2 Rabbit pAb diluted at

1, 1:2,000

2, 1:5,000