

Anti- EFHD1 Polyclonal Antibody



<u>Catalog No.</u>	<u>Size</u>
E010280-01	50µl
E010280-02	100µl

Specificity	Anti- EFHD1 (Human)
Source	Rabbit Polyclonal
Application	WB
Form	Liquid, 1 mg/ml

Specificity and Sensitivity

EFHD1 is an EF-hand domain-containing protein that displays increased expression during neuronal differentiation.

Specificity and Sensitivity

The EFHD1 Rabbit Polyclonal antibody detects endogenous EFHD1 proteins.

Source and Purification

The antibody was affinity-purified from rabbit antiserum by affinity-chromatography using epitope-specific immunogen.

Application Notes

Optimal working dilutions should be determined experimentally by the investigator. Suggested starting dilutions are as follows:

WB: 1:3,000

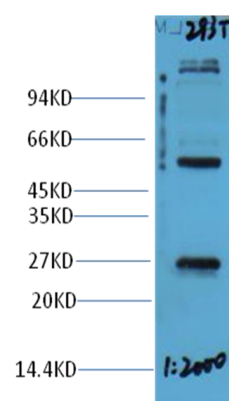
Storage Buffer

Rabbit IgG in phosphate buffered saline (without Mg^{2+} and Ca^{2+}), pH 7.4, 150mM NaCl, 0.02% sodium azide and 50% glycerol.

Storage Instructions

Stable for 1 year at $-20^{\circ}C$ from date of shipment. For maximum recovery of product, centrifuge the original vial after thawing and prior to removing the cap. Aliquot to avoid repeated freezing and thawing. Aliquot will be stable at $4^{\circ}C$ for 3 months.

Images



Western blot analysis of 293T cell lysate with EFHD1 rabbit polyclonal antibody diluted at 1:2,000.