

Anti- Fumarase/FH Polyclonal Antibody



<u>Catalog No.</u>	<u>Size</u>
E010290-01	50µl
E010290-02	100µl

Specificity	Anti- Fumarase/FH (Human Mouse Rat)
Source	Rabbit Polyclonal
Application	WB
Form	Liquid, 1 mg/ml

Specificity and Sensitivity

Fumarase (FH) is an enzyme that catalyzes the reversible hydration/dehydration of fumarate to malate in the mitochondria. Fumarase deficiency is caused by a mutation in the fumarase gene in humans. Fumarase deficiency is one of the few known deficiencies of the Krebs cycle or tricarboxylic acid cycle, the main enzymatic pathway of cellular aerobic respiration.

Specificity and Sensitivity

Fumarase antibody detects endogenous fumarase proteins.

Source and Purification

The antibody was affinity-purified from rabbit antiserum by affinity-chromatography using epitope-specific immunogen.

Application Notes

Optimal working dilutions should be determined experimentally by the investigator. Suggested starting dilutions are as follows:

WB: 1:3,000

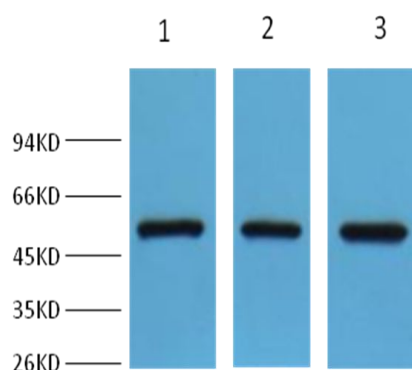
Storage Buffer

Rabbit IgG in phosphate buffered saline (without Mg^{2+} and Ca^{2+}), pH 7.4, 150mM NaCl, 0.02% sodium azide and 50% glycerol.

Storage Instructions

Stable for 1 year at $-20^{\circ}C$ from date of shipment. For maximum recovery of product, centrifuge the original vial after thawing and prior to removing the cap. Aliquot to avoid repeated freezing and thawing. Aliquot will be stable at $4^{\circ}C$ for 3 months.

Images



Western blot analysis of 1) Hela, 2) Mouse Brain, 3) HepG2, with FH Rabbit pAb diluted at 1:2,000.