

# Anti- COX2/Cyclooxygenase 2 Polyclonal Antibody



Catalog No.	Size
E010320-01	50µl
E010320-02	100µl

<b>Specificity</b>	Anti- COX2/Cyclooxygenase 2 (Human )
<b>Source</b>	Rabbit Polyclonal
<b>Application</b>	WB IHC
<b>Form</b>	Liquid, 1 mg/ml

## Specificity and Sensitivity

Prostaglandin-endoperoxide synthase 2, also known as cyclooxygenase-2 or simply COX-2, is an enzyme that in humans is encoded by the PTGS2 gene. There are two isozymes of COX encoded by distinct gene products: a constitutive COX-1 (this enzyme) and an inducible COX-2, which differ in their regulation of expression and tissue distribution. The expression of these two transcripts is differentially regulated by relevant cytokines and growth factors. A splice variant of COX-1 termed COX-3 was identified in the CNS of dogs, but does not result in a functional protein in humans. Two smaller COX-1-derived proteins (the partial COX-1 proteins PCOX-1A and PCOX-1B) have also been discovered, but their precise roles are yet to be described.

## Specificity and Sensitivity

The COX2 Rabbit Polyclonal antibody detects endogenous COX2 proteins.

## Source and Purification

The antibody was affinity-purified from rabbit antiserum by affinity-chromatography using epitope-specific immunogen.

## Application Notes

Optimal working dilutions should be determined experimentally by the investigator. Suggested starting dilutions are as follows:

WB: 1:3,000

IHC: 1:100

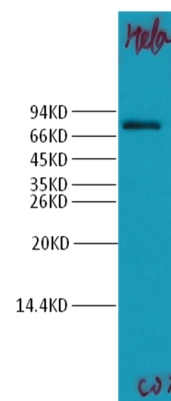
## Storage Buffer

Rabbit IgG in phosphate buffered saline (without  $Mg^{2+}$  and  $Ca^{2+}$ ), pH 7.4, 150mM NaCl, 0.02% sodium azide and 50% glycerol.

## Storage Instructions

Stable for 1 year at  $-20^{\circ}C$  from date of shipment. For maximum recovery of product, centrifuge the original vial after thawing and prior to removing the cap. Aliquot to avoid repeated freezing and thawing. Aliquot will be stable at  $4^{\circ}C$  for 3 months.

## Images



Western blot analysis of Hela with COX2 Rabbit Polyclonal antibody diluted at 1:1,000.