

# Anti- Oct1 Monoclonal Antibody



<u>Catalog No.</u>	<u>Size</u>
E010467 -01	50 µl
E010467 -02	100 µl

<b>Specificity</b>	Anti- Oct1 (human)
<b>Source</b>	Mouse Monoclonal
<b>Application</b>	WB
<b>Form</b>	Liquid, 1 mg/ml

## Product

**Other Names:** POU2F1, NF A1, Octamer binding protein 1 antibody, OTF 1, PO21, PO2F1

## Specificity and Sensitivity

Antibody can detects endogenous POU domain, class 2, transcription factor 1protein.

## Source and Purification

The antiserum was produced against synthesized peptide derived from Internal of human Oct1.  
The antibody was affinity-purified from mouse antiserum by affinity-chromatography using epitope-specific immunogen.

## Application Notes

Optimal working dilutions should be determined experimentally by the investigator. Suggested starting dilutions are as follows:

WB: 1:500-3000

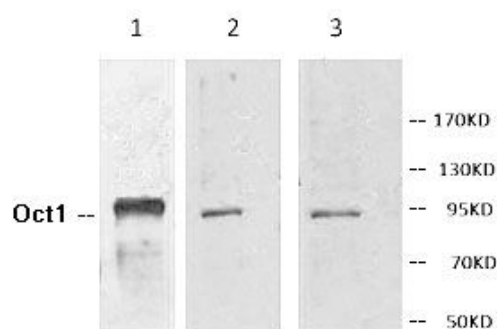
## Storage Buffer

Rabbit IgG in phosphate buffered saline (without  $Mg^{2+}$  and  $Ca^{2+}$ ), pH 7.4, 150mM NaCl, 0.02% sodium azide and 50% glycerol.

## Storage Instructions

Stable for 1 year at -20°C from date of shipment. For maximum recovery of product, centrifuge the original vial after thawing and prior to removing the cap. Aliquot to avoid repeated freezing and thawing. Aliquot will be stable at 4°C for 3 months.

## Images



Western blot analysis of extracts from *HeLa* cells (line 1), Jurkat (line2), HepG2 (line 3), using Oct1 antibody.