

Anti-β-actin Mouse Monoclonal Antibody(Mix)



<u>Catalog No.</u>	<u>Size</u>
E021021-01	100 μl
E021021-02	500 μl
E021021-03	50 μl

Specificity	Anti-β-actin Mouse Monoclonal Antibody(Mix)
Source	Mouse Monoclonal
Application	WB IHC IF
Form	Liquid, 1 mg/ml

Product

Other Names: actin antibody, b-actin antibody, beta-actin antibody

Specificity and Sensitivity

Antibody can detect endogenous β-actin protein.

Source and Purification

The antiserum was produced against synthesized peptide of β-actin.

The antibody was affinity-purified by affinity-chromatography using epitope-specific immunogen.

Application Notes

Optimal working dilutions should be determined experimentally by the investigator. Suggested starting dilutions are as follows:

WB: 1:5000~1:10000 IHC: 1:200 IF: 1:200

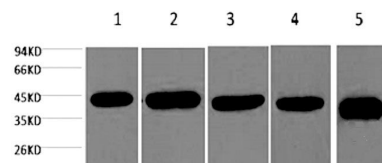
Storage Buffer

Mouse IgG in phosphate buffered saline (without Mg²⁺ and Ca²⁺), pH 7.4, 150mM NaCl, 0.02% sodium azide and 50% glycerol.

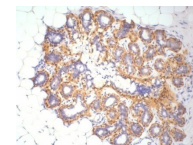
Storage Instructions

Stable for 1 year at -20°C from date of shipment. For maximum recovery of product, centrifuge the original vial after thawing and prior to removing the cap. Aliquot to avoid repeated freezing and thawing. Aliquot will be stable at 4°C for 3 months.

Images



Western blot analysis of 1) 293T, 2) Mouse Kidney tissue, 3) Hela, 4) Rat Heart tissue, 5) Rat Brain tissue with β-actin Mouse Monoclonal Antibody(Mix) diluted at 1:5,000.



IHC Staining of Human ovary tissue with β-Actin mouse mAb(5B7) diluted at 1:200.

Related Products

- PW001: Super ECL Assay kit
- E030120 : HRP, Goat Anti-Rabbit IgG(H+L)
- E030220 : AP, Goat Anti-Rabbit IgG(H+L)
- E021010: Anti-GAPDH Mouse Monoclonal Antibody
- E021020: Anti-beta Actin Mouse Monoclonal Antibody
- E022330: Anti-His Tag Mouse Monoclonal Antibody-HRP