

Anti- alpha Tubulin Monoclonal Antibody



<u>Catalog No.</u>	<u>Size</u>
E021030-01	100 µl
E021030-02	500 µl
E021030-03	50 µl

Specificity	Anti- alpha Tubulin (human mouse rat)
Source	Rabbit Monoclonal
Application	WB
Form	Liquid, 1 mg/ml

Background Information

Microtubules are involved in a wide variety of cellular activities ranging from mitosis and transport events to cell movement and the maintenance of cell shape. Tubulin itself is a globular protein which consists of two polypeptides (alpha and beta tubulin). Alpha and beta tubulin dimers are assembled to 13 protofilaments that form a microtubule of 22 nm diameter. Tyrosine ligase adds a C-terminal tyrosin to monomeric alpha tubulin. Assembled microtubules can again be detyrosinated by a cytoskeleton associated carboxypeptidase. Detyrosinated alpha tubulin is referred to as Glu-tubulin. Another post-translational modification of detyrosinated alpha tubulin is C-terminal polyglutamylation which is characteristic for microtubules in neuronal cells and the mitotic spindle. Alpha tubulin is not suitable as a loading control in adipose tissue as expression of tubulin in adipose tissue is very low.

Specificity and Sensitivity

alpha Tubulin antibody detects endogenous levels of total alpha Tubulin protein.

Application Notes

Optimal working dilutions should be determined experimentally by the investigator. Suggested starting dilutions are as follows:

WB: 1:1000~1:10000

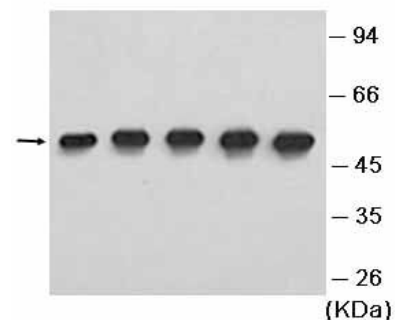
Storage Buffer

Rabbit IgG in phosphate buffered saline (without Mg²⁺ and Ca²⁺), pH 7.4, 150mM NaCl, 0.02% sodium azide and 50% glycerol.

Storage Instructions

Stable for 1 year at -20°C from date of shipment. For maximum recovery of product, centrifuge the original vial after thawing and prior to removing the cap. Aliquot to avoid repeated freezing and thawing. Aliquot will be stable at 4°C for 3 months.

Images



Western blot analysis of 293 cells lysates with anti-alpha Tubulin antibody.

Related Products

E030120 : HRP, Goat Anti-Rabbit IgG(H+L)

E032221: Dylight 488, Donkey Anti-Rabbit IgG(H+L)

E021010: Anti-GAPDH Mouse Monoclonal Antibody

E021020: Anti-beta Actin Mouse Monoclonal Antibody

E022330: Anti-His Tag Mouse Monoclonal Antibody-HRP