

Anti-beta Tubulin Monoclonal Antibody



<u>Catalog No.</u>	<u>Size</u>
E021040-01	100µl
E021040-02	500µl
E021040-03	50µl

Product Name	Anti-beta Tubulin Monoclonal Antibody [H3]
Product type	Loading Control Antibody
Application	WB IHC IF
Description	Mouse Monoclonal to beta Tubulin antibody
Immunogen	Recombinant beta Tubulin protein from bacteria
Specificity	Recognizes beta tubulin from Human, Mouse, Xenopus, Drosophila, Kangaroo rat, and Chylamydomonas.

Background Information

Microtubules are involved in a wide variety of cellular activities ranging from mitosis and transport events to cell movement and the maintenance of cell shape. Tubulin itself is a globular protein which consists of two polypeptides (alpha and beta tubulin). Alpha and beta tubulin dimers are assembled to 13 protofilaments that form a microtubule of 22 nm diameter. Tyrosine ligase adds a C-terminal tyrosin to monomeric alpha tubulin. Assembled microtubules can again be detyrosinated by a cytoskeleton associated carboxypeptidase. Detyrosinated alpha tubulin is referred to as Glu-tubulin. Another post-translational modification of detyrosinated alpha tubulin is C-terminal polyglutamylation which is characteristic for microtubules in neuronal cells and the mitotic spindle.

Application Notes

Optimal working dilutions should be determined experimentally by the investigator. Suggested starting dilutions are as follows: Western blot (1:1000-1:10,000), Immunofluorescence and Immunocytochemistry (1:200-1:800). The antibody recognizes a 50kDa band in a Western Blot analysis.

Host

Mouse

Clonality

H3

Storage Buffer

PBS, pH 7.4 with 0.05% sodium azide, 50% Glycerol.

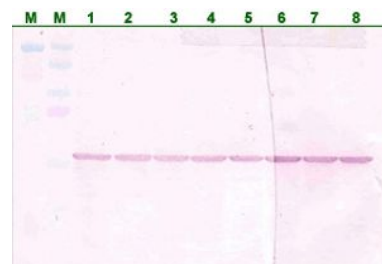
Form

Liquid, 1.000mg/ml

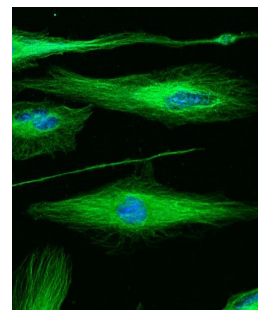
Storage Instructions

Stable for 1 year at -20°C from date of shipment. For maximum recovery of product, centrifuge the original vial after thawing and prior to removing the cap. Aliquot to avoid repeated freezing and thawing. Aliquot will be stable at 4°C for 3 months.

Images



Western blot analysis of 293 cells lysates with anti-alpha Tubulin antibody(lane 1-5) and anti-beta Tubulin(lane 6-8) antibody.



Primary Glioblastoma Cells stained with anti-beta Tubulin antibody (secondary antibody Dylight 488-conjugated) and DAPI for DNA visualization by Confocal Microscopy.