

# Anti- $\beta$ -tubulin Mouse Monoclonal Antibody(Mix)



<u>Catalog No.</u>	<u>Size</u>
E021041-01	100 $\mu$ l
E021041-02	500 $\mu$ l
E021041-03	50 $\mu$ l

<b>Specificity</b>	Anti- $\beta$ -tubulin Mouse Monoclonal Antibody(Mix)
<b>Source</b>	Mouse Monoclonal
<b>Application</b>	WB IHC IF
<b>Form</b>	Liquid, 1 mg/ml

## Product

**Other Names:** Beta 4 tubulin, TBB5, TUBB2, TUBB2A, tubulin beta 2A, beta tubulin, tubulin beta chain

## Specificity and Sensitivity

Antibody can detect endogenous  $\beta$ -tubulin protein.

## Source and Purification

The antiserum was produced against synthesized peptide of  $\beta$  -tubulin.

The antibody was affinity-purified by affinity-chromatography using epitope-specific immunogen.

## Application Notes

Optimal working dilutions should be determined experimentally by the investigator. Suggested starting dilutions are as follows:

WB: 1:5000~1:10000 IHC: 1:200 IF: 1:200

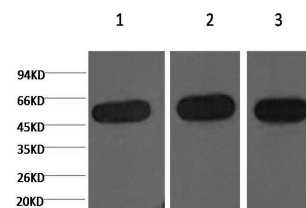
## Storage Buffer

Mouse IgG in phosphate buffered saline (without  $Mg^{2+}$  and  $Ca^{2+}$ ), pH 7.4, 150mM NaCl, 0.02% sodium azide and 50% glycerol.

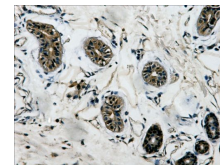
## Storage Instructions

Stable for 1 year at  $-20^{\circ}C$  from date of shipment. For maximum recovery of product, centrifuge the original vial after thawing and prior to removing the cap. Aliquot to avoid repeated freezing and thawing. Aliquot will be stable at  $4^{\circ}C$  for 3 months.

## Images



Western blot analysis of 1) HeLa, 2) Mouse Kidney tissue, 3) Rat Heart tissue with  $\beta$ -tubulin diluted at 1:5,000.



IHC Staining of Human colon tissue with  $\beta$ -tubulin mouse mAb(5G3) diluted at 1:200

## Related Products

PW001: Super ECL Assay kit

E030120 : HRP, Goat Anti-Rabbit IgG(H+L)

E030220 : AP, Goat Anti-Rabbit IgG(H+L)

E021010: Anti-GAPDH Mouse Monoclonal Antibody

E021020: Anti-beta Actin Mouse Monoclonal Antibody

E022330: Anti-His Tag Mouse Monoclonal Antibody-HRP