

Anti-GAPDH Rabbit Polyclonal Antibody



<u>Catalog No.</u>	<u>Size</u>
E021060-01	100µl
E021060-02	500µl
E021060-03	50µl

Specificity	Anti- GAPDH (human, monkey, mouse, rat, chicken, hamster and dog)
Source	Rabbit Polyclonal
Application	WB IHC IF
Form	Liquid, 1 mg/ml

Background Information

Glyceraldehyde 3 phosphate dehydrogenase (GAPDH) is well known as one of the key enzymes involved in glycolysis. GAPDH is constitutively expressed in almost all tissues at high levels, therefore antibodies against GAPDH are useful as loading controls for Western Blotting. Some physiological factors, such as hypoxia and diabetes, increase GAPDH expression in certain cell types..

Source and Purification

This polyclonal antibody is produced by immunizing rabbits with purified human GAPDH. Antibodies are purified by protein A affinity chromatography.

Application Notes

Optimal working dilutions should be determined experimentally by the investigator. Suggested starting dilutions are as follows: Western blot (1:1000-1:5000), Immunofluorescence and Immunocytochemistry (1:200-1:800).

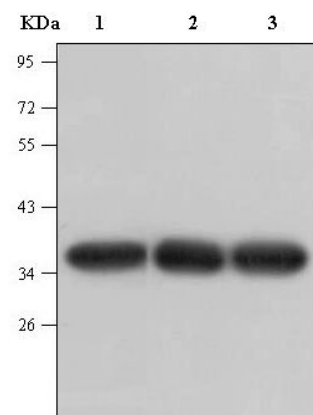
Storage Buffer

PBS, pH 7.4 with 0.02% sodium azide, 50% Glycerol.

Storage Instructions

Stable for 1 year at -20°C from date of shipment. For maximum recovery of product, centrifuge the original vial after thawing and prior to removing the cap. Aliquot to avoid repeated freezing and thawing. Aliquot will be stable at 4°C for 3 months.

Images



Western blot analysis of HeLa cell lysate(lane1) , Rat brain tissue lysate(lane2) and Mouse brain tissue lysate(lane3) with GAPDH PAB (SLP010) diluted at 1:5000.