

Anti-beta Actin Rabbit Polyclonal Antibody



<u>Catalog No.</u>	<u>Size</u>
E021070-01	100µl
E021070-02	500µl
E021070-03	50µl

Specificity	Anti- beta Actin (human rabbit mouse rat chicken hamster and dog)
Source	Rabbit Polyclonal
Application	WB IHC IF
Form	Liquid, 1 mg/ml

Background Information

All eukaryotic cells express actin, which often constitutes as much as 50% of total cellular protein. Actin filaments can form both stable and labile structures and are crucial components of microvilli and the contractile apparatus of muscle cells. Beta actin is one of six different actin isoforms which have been identified. Actins are highly conserved proteins that are involved in cell motility, structure and integrity. Be aware when using beta actin antibodies as loading controls that although beta actin is normally the best protein to use as a loading control, under some conditions its amounts can vary between samples. In particular, expression of beta actin in adipose tissue is very low.

Source and Purification

This polyclonal antibody is produced by immunizing rabbits with purified beta actin protein of human. Antibodies are purified by protein A affinity chromatography.

Application Notes

Optimal working dilutions should be determined experimentally by the investigator. Suggested starting dilutions are as follows: Western blot (1:1000-1:5000), Immunofluorescence and Immunocytochemistry (1:200-1:800).

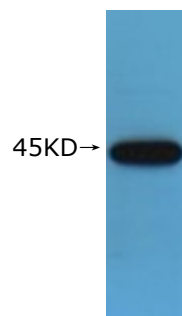
Storage Buffer

PBS, pH 7.4 with 0.05% sodium azide, 50% Glycerol.

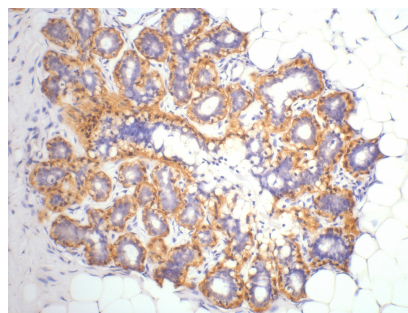
Storage Instructions

Stable for 1 year at -20°C from date of shipment. For maximum recovery of product, centrifuge the original vial after thawing and prior to removing the cap. Aliquot to avoid repeated freezing and thawing. Aliquot will be stable at 4°C for 3 months.

Images



Western blot analysis of Mouse brain tissue lysate 1:5000



Immunohistochemistry Staining of Human Ovary tissue at 1:200.