

Anti- β I tubulin Monoclonal Antibody



<u>Catalog No.</u>	<u>Size</u>
E021140-01	100 μ l
E021140-02	500 μ l
E021140-03	50 μ l

Specificity	Anti- β I tubulin (Human Rat Mouse)
Source	Mouse Monoclonal
Application	WB
Form	Liquid, 1 mg/ml

Background:

Tubulin is one of several members of a small family of globular proteins. The tubulin superfamily includes five distinct families, the alpha-, beta-, gamma-, delta-, and epsilon-tubulins. The most common members of the tubulin family are α -tubulin and β -tubulin, the proteins that make up microtubules. Each has a molecular weight of approximately 55 KD. Microtubules are assembled from dimers of α - and β -tubulin.

Specificity and Sensitivity

The β I tubulin antibody can recognize endogenous β I tubulin proteins.

Source and Purification

This monoclonal antibody is produced by immunizing mice with a synthetic peptide corresponding to an epitope of β I tubulin coupled to KLH. Antibodies are purified by protein A affinity chromatography.

Application Notes

Optimal working dilutions should be determined experimentally by the investigator. Suggested starting dilutions are as follows:

WB: 1:1,000~10,000

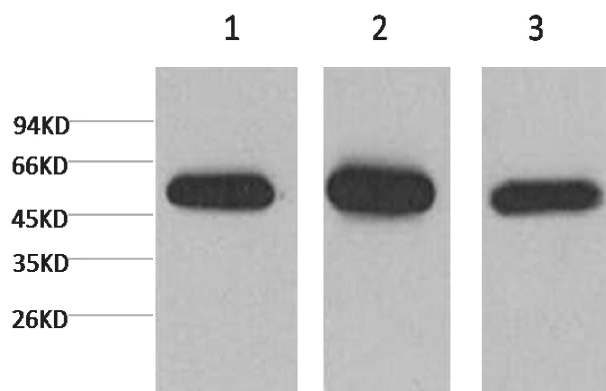
Storage Buffer

PBS, pH 7.4, containing 0.02% sodium azide as Preservative and 50% Glycerol.

Storage Instructions

Stable for 1 year at -20°C from date of shipment. For maximum recovery of product, centrifuge the original vial after thawing and prior to removing the cap. Aliquot to avoid repeated freezing and thawing. Aliquot will be stable at 4°C for 3 months.

Images



Western blot analysis of 1) Hela, 2) Mouse Brain Tissue, 3) Rat Brain Tissue with β I tubulin diluted at 1:5,000.