

Anti- β -tubulin Mouse Monoclonal Antibody(G6)



<u>Catalog No.</u>	<u>Size</u>
E021210-01	100 μ l
E021210-02	500 μ l
E021210-03	50 μ l

Specificity	Anti- β -tubulin Mouse Monoclonal Antibody(G6)
Source	Mouse Monoclonal
Application	WB
Form	Liquid, 1 mg/ml

Product

Other Names: Beta 4 tubulin, TBB5, TUBB2, TUBB2A, tubulin beta 2A, beta tubulin, tubulin beta chain

Specificity and Sensitivity

The β -tubulin antibody can detect endogenous β -tubulin protein.

Source and Purification

The antiserum was produced against synthesized peptide of β -tubulin.

The antibody was affinity-purified by affinity-chromatography using epitope-specific immunogen.

Application Notes

Optimal working dilutions should be determined experimentally by the investigator. Suggested starting dilutions are as follows:

WB: 1:5000~1:10000

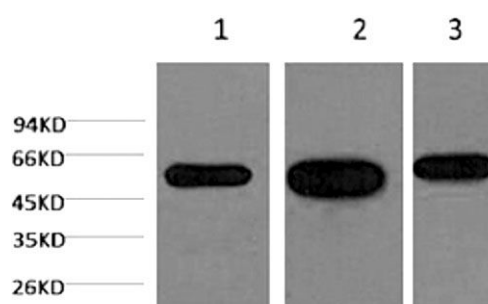
Storage Buffer

Mouse IgG in phosphate buffered saline (without Mg^{2+} and Ca^{2+}), pH 7.4, 150mM NaCl, 0.02% sodium azide and 50% glycerol.

Storage Instructions

Stable for 1 year at $-20^{\circ}C$ from date of shipment. For maximum recovery of product, centrifuge the original vial after thawing and prior to removing the cap. Aliquot to avoid repeated freezing and thawing. Aliquot will be stable at $4^{\circ}C$ for 3 months.

Images



Western blot analysis of HeLa (line 1), Mouse Brain tissue (line 2) and Rat Brain tissue (line 3) with β -tubulin Mouse Monoclonal Antibody(G6) diluted at 1:5,000.

Related Products

PW001: Super ECL Assay kit

E030120 : HRP, Goat Anti-Rabbit IgG(H+L)

E030220 : AP, Goat Anti-Rabbit IgG(H+L)

E021010: Anti-GAPDH Mouse Monoclonal Antibody

E021020: Anti-beta Actin Mouse Monoclonal Antibody

E022330: Anti-His Tag Mouse Monoclonal Antibody-HRP