

# Anti- $\beta$ II tubulin Mouse Monoclonal Antibody(Mix)



## (Rodent Preferred)

Catalog No.	Size
E021222-01	100 $\mu$ l
E021222-02	500 $\mu$ l
E021222-03	50 $\mu$ l

<b>Specificity</b>	Anti- $\beta$ II tubulin (human mouse rat)
<b>Source</b>	Mouse Monoclonal
<b>Application</b>	WB
<b>Form</b>	Liquid, 1 mg/ml

### Product

**Other Names:** class II beta tubulin isotype antibody, TUBB 2 antibody, Tubulin beta 2 antibody

### Specificity and Sensitivity

The antibody can detect endogenous  $\beta$  II tubulin protein.

### Source and Purification

The antiserum was produced against synthesized peptide of  $\beta$  II tubulin.

The antibody was affinity-purified by affinity-chromatography using epitope-specific immunogen.

### Application Notes

Optimal working dilutions should be determined experimentally by the investigator. Suggested starting dilutions are as follows:

WB 1:50000-1:100000

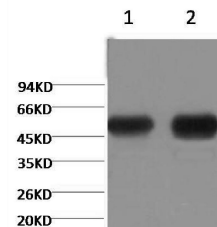
### Storage Buffer

Mouse IgG in phosphate buffered saline (without  $Mg^{2+}$  and  $Ca^{2+}$ ), pH 7.4, 150mM NaCl, 0.02% sodium azide and 50% glycerol.

### Storage Instructions

Stable for 1 year at  $-20^{\circ}C$  from date of shipment. For maximum recovery of product, centrifuge the original vial after thawing and prior to removing the cap. Aliquot to avoid repeated freezing and thawing. Aliquot will be stable at  $4^{\circ}C$  for 3 months.

### Images



Western blot analysis of Mouse Brain tissue (line 1), and Rat Brain tissue (line 2), diluted at 1:100,000.

### Related Products

PW001: Super ECL Assay kit

E030120 : HRP, Goat Anti-Rabbit IgG(H+L)

E030220 : AP, Goat Anti-Rabbit IgG(H+L)

E021010: Anti-GAPDH Mouse Monoclonal Antibody

E021020: Anti-beta Actin Mouse Monoclonal Antibody

E022330: Anti-His Tag Mouse Monoclonal Antibody-HRP