

# Anti-His Tag Mouse Monoclonal Antibody (Mix)



<u>Catalog No.</u>	<u>Size</u>
E022021-01	100µl
E022021-02	500µl
E022021-03	50µl

<b>Specificity</b>	Anti- His Tag Mouse Monoclonal Antibody (Mix)
<b>Source</b>	Mouse Monoclonal
<b>Application</b>	WB IP IF
<b>Form</b>	Liquid, 1 mg/ml

## Product

**Other Names:** 6\*His, 6 His tag antibody

## Specificity and Sensitivity

The His tag antibody can recognize C-terminal, internal, and N-terminal His-tag fusion proteins.

## Source and Purification

The antiserum was produced against synthesized His tag. The antibody was affinity-purified by affinity-chromatography using epitope-specific immunogen.

## Application Notes

Optimal working dilutions should be determined experimentally by the investigator. Suggested starting dilutions are as follows:

WB: 1:5000~1:10000 IP: 1:200 IF: 1:500

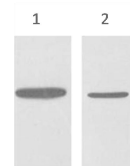
## Storage Buffer

Mouse IgG in phosphate buffered saline (without Mg<sup>2+</sup> and Ca<sup>2+</sup>), pH 7.4, 150mM NaCl, 0.02% sodium azide and 50% glycerol.

## Storage Instructions

Stable for 1 year at -20°C from date of shipment. For maximum recovery of product, centrifuge the original vial after thawing and prior to removing the cap. Aliquot to avoid repeated freezing and thawing. Aliquot will be stable at 4°C for 3 months.

## Images



Western blot analysis of His-Tag recombinant protein with Anti-His Tag Mouse Monoclonal Antibody (Mix) diluted at 1:10,000 His-MBP recombinant protein (Line 1) and His-Tag transfected 293T(Line 2).

## Related Products

PW001: Super ECL Assay kit

E030120 : HRP, Goat Anti-Rabbit IgG(H+L)

E030220 : AP, Goat Anti-Rabbit IgG(H+L)

E021010: Anti-GAPDH Mouse Monoclonal Antibody

E021020: Anti-beta Actin Mouse Monoclonal Antibody

E022330: Anti-His Tag Mouse Monoclonal Antibody-HRP