

# Anti-mCherry Tag Mouse Monoclonal Antibody(Mix)



<u>Catalog No.</u>	<u>Size</u>
E022111-01	100 µl
E022111-02	500 µl
E022111-03	50 µl

<b>Specificity</b>	Anti- mCherry Tag Mouse Monoclonal Antibody(Mix)
<b>Source</b>	Mouse Monoclonal
<b>Application</b>	WB IP
<b>Form</b>	Liquid, 1 mg/ml

## Product

**Other Names:** N/A

## Specificity and Sensitivity

The mCherry tag antibody can recognize mCherry and mCherry tag fusion proteins.

## Source and Purification

The antiserum was produced against synthesized mCherry tag.

The antibody was affinity-purified by affinity-chromatography using epitope-specific immunogen.

## Application Notes

Optimal working dilutions should be determined experimentally by the investigator. Suggested starting dilutions are as follows:

WB: 1:5000    IP: 1:200

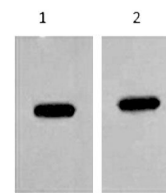
## Storage Buffer

Mouse IgG in phosphate buffered saline (without Mg<sup>2+</sup> and Ca<sup>2+</sup>), pH 7.4, 150mM NaCl, 0.02% sodium azide and 50% glycerol.

## Storage Instructions

Stable for 1 year at -20°C from date of shipment. For maximum recovery of product, centrifuge the original vial after thawing and prior to removing the cap. Aliquot to avoid repeated freezing and thawing. Aliquot will be stable at 4°C for 3 months.

## Images



Western blot analysis of mCherry recombinant protein with mCherry Tag Mouse Monoclonal Antibody(Mix) diluted at 1:5,000 (Line 1) and 1:10,000 (Line 2).

## Related Products

PW001: Super ECL Assay kit

E030120 : HRP, Goat Anti-Rabbit IgG(H+L)

E030220 : AP, Goat Anti-Rabbit IgG(H+L)

E021010: Anti-GAPDH Mouse Monoclonal Antibody

E021020: Anti-beta Actin Mouse Monoclonal Antibody

E022330: Anti-His Tag Mouse Monoclonal Antibody-HRP