

Anti-RFP Tag Polyclonal Antibody



<u>Catalog No.</u>	<u>Size</u>
E022260-01	100µl
E022260-02	500µl
E022260-03	50µl

Specificity	Anti- RFP Tag (C-terminal, and N-terminal)
Source	Rabbit Polyclonal
Application	WB
Form	Liquid, 1 mg/ml

Application Notes

Optimal working dilutions should be determined experimentally by the investigator. Prepare working dilution immediately before use. Suggested starting dilutions are as follows: Western blot (1:1000-1:5000)

Source and Purification

This Polyclonal antibody is produced by immunizing rabbits with purified Recombinant RFP expressed in E.coli. Antibodies are purified by protein A affinity chromatography.

Specificity and Sensitivity

Anti- RFP Tag Polyclonal Antibody recognizes C-terminal and N-terminal RFP-tagged proteins.

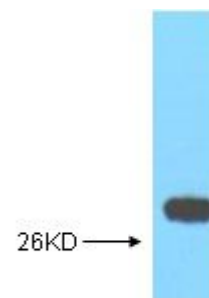
Storage Buffer

PBS, pH 7.4 with 0.05% sodium azide, 50% Glycerol.

Storage Instructions

Stable for 1 year at -20°C from date of shipment. For maximum recovery of product, centrifuge the original vial after thawing and prior to removing the cap. Aliquot to avoid repeated freezing and thawing. Aliquot will be stable at 4°C for 3 months.

Images



Western blot analysis of RFP-tag rabbit PAb diluted at 1:5000