

Anti- Plant GST Polyclonal Antibody



<u>Catalog No.</u>	<u>Size</u>
E022270-01	100µl
E022270-02	500µl
E022270-03	50µl

Specificity	Anti- Plant GST (Nicotiana tabacum)
Source	Rabbit Polyclonal
Application	WB
Form	Liquid, 1 mg/ml

Specificity and Sensitivity

The soluble glutathione transferases (GSTs) are encoded by a large and diverse gene family in plants. GSTs are predominantly expressed in the cytosol, where their GSH-dependent catalytic functions include the conjugation and resulting detoxification of herbicides, the reduction of organic hydroperoxides formed during oxidative stress and the isomerization of maleylacetoacetate to fumarylacetoacetate, a key step in the catabolism of tyrosine. GSTs also have non-catalytic roles, binding flavonoid natural products in the cytosol prior to their deposition in the vacuole.

Specificity and Sensitivity

The Plant GST antibody can recognize endogenous Plant GST proteins.

Source and Purification

The antibody was affinity-purified from rabbit antiserum by affinity-chromatography using epitope-specific immunogen.

Application Notes

Optimal working dilutions should be determined experimentally by the investigator. Suggested starting dilutions are as follows:

WB: 1:3,000-10,000

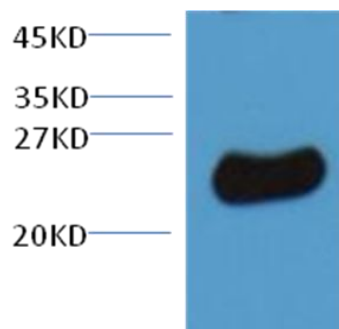
Storage Buffer

Rabbit IgG in phosphate buffered saline (without Mg²⁺ and Ca²⁺), pH 7.4, 150mM NaCl, 0.02% sodium azide and 50% glycerol.

Storage Instructions

Stable for 1 year at -20°C from date of shipment. For maximum recovery of product, centrifuge the original vial after thawing and prior to removing the cap. Aliquot to avoid repeated freezing and thawing. Aliquot will be stable at 4°C for 3 months.

Images



10ug total Nicotiana tabacum lysate + primary antibody dilute at 1:3000