

Anti-RFP Tag Polyclonal Antibody



<u>Catalog No.</u>	<u>Size</u>
E022400-01	100µl
E022400-02	500µl
E022400-03	50µl

Specificity	Anti- RFP Tag
Source	Mouse Polyclonal
Application	WB IHC IP
Form	Liquid, 1 mg/ml

Application Notes

Optimal working dilutions should be determined experimentally by the investigator. Prepare working dilution immediately before use. Suggested starting dilutions are as follows:

WB:1:1000-1:5000 IHC: 1:200 IP: 1:100

Source and Purification

This Polyclonal antibody is produced by immunizing rabbits with purified Recombinant RFP expressed in E.coli. Antibodies are purified by protein A affinity chromatography.

Specificity and Sensitivity

The RFP tag antibody can recognize RFP tag fusion proteins

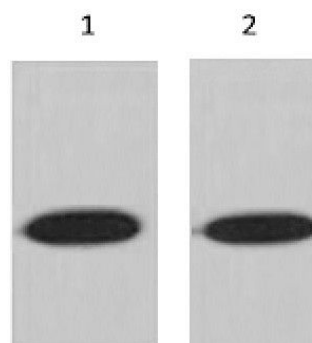
Storage Buffer

PBS, pH 7.4 with 0.02% sodium azide, 50% Glycerol.

Storage Instructions

Stable for 1 year at -20°C from date of shipment. For maximum recovery of product, centrifuge the original vial after thawing and prior to removing the cap. Aliquot to avoid repeated freezing and thawing. Aliquot will be stable at 4°C for 3 months.

Images



Western blot analysis of RFP-tag rabbit PAb diluted at :
1:5,000 1:10,000

Related Products

PW001: Super ECL Assay kit

E030110 : HRP, Goat Anti-Mouse IgG(H+L)

E030210 : AP, Goat Anti-Mouse IgG(H+L)

E021010: Anti-GAPDH Mouse Monoclonal Antibody

E021020: Anti-beta Actin Mouse Monoclonal Antibody

E022330: Anti-His Tag Mouse Monoclonal Antibody-HRP