

Anti- GFP Mouse Polyclonal Antibody



<u>Catalog No.</u>	<u>Size</u>
E022410-01	100 µl
E022410-02	500 µl
E022410-03	50 µl

Specificity	Anti- GFP Mouse Polyclonal Antibody
Source	Mouse Monoclonal
Application	WB IHC IF IP
Form	Liquid, 1 mg/ml

Product

Other Names: Green fluorescent protein

Specificity and Sensitivity

The GFP tag antibody can recognize GFP,EGFP and GFP, EGFP tag fusion proteins. It may also recognize RFP, YFP, CFP.

Source and Purification

The antiserum was produced against synthesized GFP tag. The antibody was affinity-purified by affinity-chromatography using epitope-specific immunogen.

Application Notes

Optimal working dilutions should be determined experimentally by the investigator. Suggested starting dilutions are as follows:

WB: 1:5000~10000 IHC: 1:200 IF: 1:200 IP: 1:100

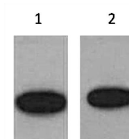
Storage Buffer

Mouse IgG in phosphate buffered saline (without Mg²⁺ and Ca²⁺), pH 7.4, 150mM NaCl, 0.02% sodium azide and 50% glycerol.

Storage Instructions

Stable for 1 year at -20°C from date of shipment. For maximum recovery of product, centrifuge the original vial after thawing and prior to removing the cap. Aliquot to avoid repeated freezing and thawing. Aliquot will be stable at 4°C for 3 months.

Images



Western blot analysis of GFP Recombinant protein with GFP Mouse Polyclonal Antibody diluted at 1:5,000 (line 1) and 1:10,000 (line 2).

Related Products

PW001: Super ECL Assay kit

E030120 : HRP, Goat Anti-Rabbit IgG(H+L)

E030220 : AP, Goat Anti-Rabbit IgG(H+L)

E021010: Anti-GAPDH Mouse Monoclonal Antibody

E021020: Anti-beta Actin Mouse Monoclonal Antibody

E022330: Anti-His Tag Mouse Monoclonal Antibody-HRP