

# Anti- ECFP Mouse Polyclonal Antibody



<u>Catalog No.</u>	<u>Size</u>
E022440-01	100 µl
E022440-02	500 µl
E022440-03	50 µl

<b>Specificity</b>	Anti- ECFP Mouse Polyclonal Antibody
<b>Source</b>	Mouse Monoclonal
<b>Application</b>	WB IHC IF
<b>Form</b>	Liquid, 1 mg/ml

## Product

**Other Names:** Cyan fluorescent protein, Enhanced Cyan fluorescent protein

## Specificity and Sensitivity

The ECFP Antibody can detect ECFP & CFP tag protein.

## Source and Purification

The antiserum was produced against synthesized ECFP tag. The antibody was affinity-purified by affinity-chromatography using epitope-specific immunogen.

## Application Notes

Optimal working dilutions should be determined experimentally by the investigator. Suggested starting dilutions are as follows:

WB: 1:2000~1:10000 IHC: 1:200 IF: 1:200

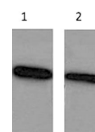
## Storage Buffer

Mouse IgG in phosphate buffered saline (without Mg<sup>2+</sup> and Ca<sup>2+</sup>), pH 7.4, 150mM NaCl, 0.02% sodium azide and 50% glycerol.

## Storage Instructions

Stable for 1 year at -20°C from date of shipment. For maximum recovery of product, centrifuge the original vial after thawing and prior to removing the cap. Aliquot to avoid repeated freezing and thawing. Aliquot will be stable at 4°C for 3 months.

## Images



Western blot analysis of ECFP Recombinant protein with ECFP Mouse Polyclonal Antibody diluted at 1:5,000 (line 1) and 1:10,000 (line 2).

## Related Products

PW001: Super ECL Assay kit

E030120 : HRP, Goat Anti-Rabbit IgG(H+L)

E030220 : AP, Goat Anti-Rabbit IgG(H+L)

E021010: Anti-GAPDH Mouse Monoclonal Antibody

E021020: Anti-beta Actin Mouse Monoclonal Antibody

E022330: Anti-His Tag Mouse Monoclonal Antibody-HRP