

Prestained Protein Marker I

Catalog No.
E040252

Size
500µl



Product description : Prestained Protein Marker I consists of 10 proteins that resolve into sharp, tight bands in the range of 10-170 kDa. This unique protein ladder allows you to monitor protein separation during electrophoresis, estimate molecular weight of the protein of interest, and evaluate western blot transfer efficiency. Proteins are covalently coupled with a blue chromophore except for two reference bands (one green and one red band at 10kDa and 72 kDa respectively) when separated on SDS-PAGE (Tris-glycine bufer).

Range : 10-170kDa

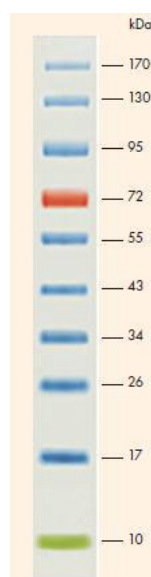
Recommended load: 5µl / well

Recommendation for loading :

1. Thaw Prestained Protein Marker I either at room temperature or at 37-40°C for a few minutes to dissolve precipitates. Do not boil.
2. Mix thoroughly to ensure the solution is homogeneous.
3. Load 5µl/well on SDS-PAGE.

Storage Instructions : Stable at 4°C for 3 months. Store at -20°C for 24 months.

Guide for molecular weight estimation (kDa)



4-20% Tris-glycine SDS-PAGE, 5µl