

Prestained Protein Marker II

Catalog No.

E040266

Size

500µl



Product description: Prestained Protein Marker II consists of 9 proteins that resolve into sharp, tight bands in the range of 10-250 kDa. This unique protein ladder allows you to monitor protein separation during electrophoresis, estimate molecular weight of the protein of interest, and evaluate western blot transfer efficiency. Proteins are covalently coupled with a blue chromophore except for two reference bands (two red bands at 28 kDa and 72kDa respectively) when separated on SDS-PAGE (Tris-glycine buffer).

Range: 10-250 kDa

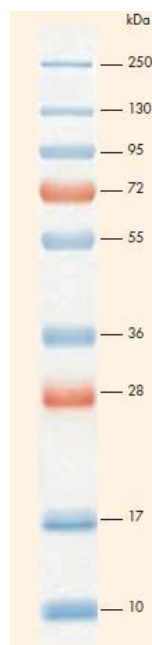
Recommended load: 5µl / well

Recommendation for loading:

1. Thaw Prestained Protein Marker II either at room temperature or at 37-40°C for a few minutes to dissolve precipitates. Do not boil.
2. Mix thoroughly to ensure the solution is homogeneous.
3. Load 5µl/well on SDS-PAGE.

Storage Instructions: Stable at 4°C for 3 months. Store at -20°C for 24 months.

Guide for molecular weight estimation (kDa)



8-16% Tris-glycine SDS-PAGE 5µl