

# Anti- RUNX1 Polyclonal Antibody



| Catalog No. | Size   |
|-------------|--------|
| A400911-01  | 50 µl  |
| A400911-02  | 100 µl |

|                    |                               |
|--------------------|-------------------------------|
| <b>Specificity</b> | Anti- RUNX1 (human mouse rat) |
| <b>Source</b>      | Rabbit Polyclonal             |
| <b>Application</b> | WB IHC                        |
| <b>Form</b>        | Liquid, 1 mg/ml               |

## Product

Swiss-Prot No.: Q01196

**Other Names:** AML1; AML1-EVI-1; AMLCR1; CBFA2; EVI-1; PEBP2Ab;

## Specificity and Sensitivity

RUNX1 Antibody detects endogenous levels of total RUNX1.

## Source and Purification

A synthetic peptide of human RUNX1, Immunogen affinity purified.

## Application Notes

Optimal dilutions/concentrations should be determined by the end user. Suggested starting dilutions are as follows:

WB 1:500-1:2000 IHC 1:50-1:200

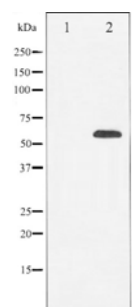
## Storage Buffer

Rabbit IgG in phosphate buffered saline , pH 7.4, 150mM NaCl, 0.02% sodium azide and 50% glycerol.

## Storage Instructions

Store at -20 °C. Stable for 12 months from date of receipt. For maximum recovery of product, centrifuge the original vial after thawing and prior to removing the cap. Aliquot to avoid repeated freezing and thawing. Aliquot will be stable at 4°C for 3 months.

## Images



Western blot analysis of extracts from A549 cells, using RUNX antibody.