

Anti- VEGF Polyclonal Antibody



<u>Catalog No.</u>	<u>Size</u>
A209631-01	50 µl
A209631-02	100 µl

Specificity	Anti- VEGF (human mouse rat)
Source	Rabbit Polyclonal
Application	WB IHC
Form	Liquid, 1 mg/ml

Product

Swiss-Prot No.: P15692

Other Names: vascular endothelial growth factor A, VPF, VEGF, MVCD1

Specificity and Sensitivity

VEGF Antibody detects endogenous levels of total VEGF.

Source and Purification

The antiserum was produced against synthesized peptide derived from human VEGF.

Immunogen affinity purified.

Application Notes

Optimal dilutions/concentrations should be determined by the end user. Suggested starting dilutions are as follows:

WB 1:500~1:1000

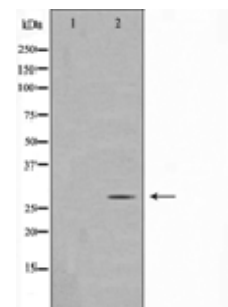
Storage Buffer

Rabbit IgG in phosphate buffered saline , pH 7.4, 150mM NaCl, 0.02% sodium azide and 50% glycerol.Store at -20 °C.

Storage Instructions

Store at -20 °C.Stable for 12 months from date of receipt. For maximum recovery of product, centrifuge the original vial after thawing and prior to removing the cap. Aliquot to avoid repeated freezing and thawing. Aliquot will be stable at 4°C for 3 months.

Images



Western blot analysis of HeLa with VEGF, the lane on the left is treated with the antigen-specific peptide.