

Anti- α SMA Antibody



Catalog No.	Size
A307717-01	50 μ l
A307717-02	100 μ l

Specificity	Anti-SMA (human mouse rat)
Source	Rabbit IgG
Application	WB IHC IF/ICC
Form	Liquid, 1 mg/ml

Product

Swiss-Prot No.:P62736

Other Names: ACTA2,Actsa, Actvs,Actin, aortic smooth muscle,Alpha-actin-2 Cell growth-inhibiting gene 46 protein

Specificity and Sensitivity

alpha-SMA Antibody detects endogenous levels of alpha-SMA

Source and Purification

The antiserum was produced against synthesized peptide derived from human α -SMA

Application Notes

Optimal working dilutions should be determined experimentally by the investigator. Suggested starting dilutions are as follows:

WB: 1:500~1:3000 IHC: 1:50~1:200 IF: 1:200

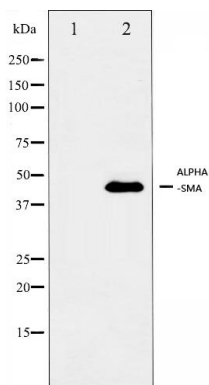
Storage Buffer

Rabbit IgG in phosphate buffered saline (without Mg^{2+} and Ca^{2+}), pH 7.4, 150mM NaCl, 0.02% sodium azide and 50% glycerol.

Storage Instructions

Stable for 1 year at $-20^{\circ}C$ from date of shipment. For maximum recovery of product, centrifuge the original vial after thawing and prior to removing the cap. Aliquot to avoid repeated freezing and thawing. Aliquot will be stable at $4^{\circ}C$ for 3 months.

Images



Western blot analysis on JK using alpha-SMA antibody ,The lane on the left is blocked with the antigen-specific peptide.